


**25,000 CYCLE COAXTAC™**
**Coaxial contacts to 10 GHz**

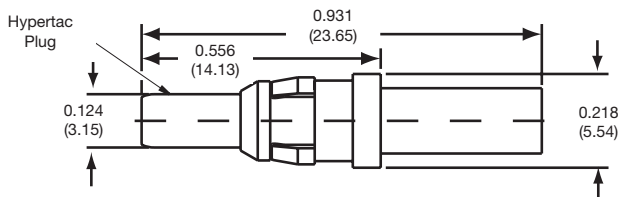
- 1.20:1 VSWR max. to 3 GHz
- 1.50:1 VSWR max. to 10 GHz
- >25,000 mating cycles
- 50 Ohm impedance
- Mounts in DIN 41612 insulator cavities (3.15 only)
- Available in D, L, N Series (Consult Factory)
- Hypertac inner/outer contacts
- Non-magnetic versions available (Consult Factory)

**GENERAL SPECIFICATIONS - 3.15 mm, 5.5mm, 8.6 mm**

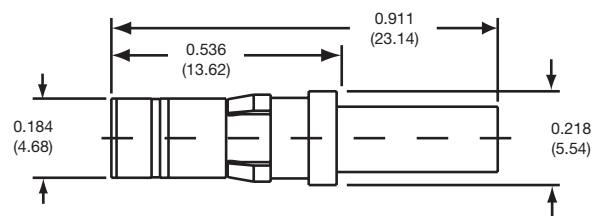
Nominal Impedance	50 ohms
Frequency Range	dc to 10 GHz
Temperature Rating	-55°C to 125°C
Materials	Brass, Copper, Beryllium Copper, Phos. Bronze, PTFE
Finishes	Gold over Nickel over Copper
<b>Electrical Parameters (Cable Dependent)</b>	
Voltage Standing Wave Ratio (VSWR)	dc to 3 GHz 1.20:1 3GHz to 10 GHz 1.50:1
RF Transmission Loss	0.50 dB max. @ 3 GHz
Insulation Resistance	5,000 megohm min.
Dielectric Withstanding Voltage	500 VRMS
<b>Contact Resistance 3.15 mm, 5.5 mm, 8.6 mm</b>	
Inner Contact	8 milliohms, 4 milliohms, 2 milliohms max
Outer Contact	2 milliohms, 1 milliohm, 0.5 milliohms max
<b>Mechanical Parameters</b>	
Extraction Force	3 oz., 10 oz., 160 oz. average
Connector Durability	> 25,000 cycles

<b>CRIMP CABLE ATTACHMENT</b>			
<b>Part Number</b>	<b>Description</b>	<b>Cable Type</b>	<b>Cabling Instructions</b>
<b>3.15 mm</b>			
YCX0315-002AH	Crimp Socket	RG316	S50302
YCX0315-019AH	Crimp Socket	RG316DB	S50302
YCX0315-004H	Crimp Pin	RG316	S50304
YCX0315-018H	Crimp Pin	RG316DB	S50304
<b>5.5 mm</b>			
YCX055-006H	Crimp Pin	SFT142	S50424
YCX055-007AH	Crimp Socket	SFT142	S50424
<b>8.6 mm</b>			
YCX086-005H	Crimp Pin	RG316	S50382
YCX086-009H	Crimp Pin	RG316DB	S50382
YCX086-006AH	Crimp Socket	RG316	S50382
YCX086-010AH	Crimp Socket	RG316DB	S50382
YCX086-007H	Crimp Pin	SFT142	S50382
YCX086-008AH	Crimp Socket	SFT142	S50382

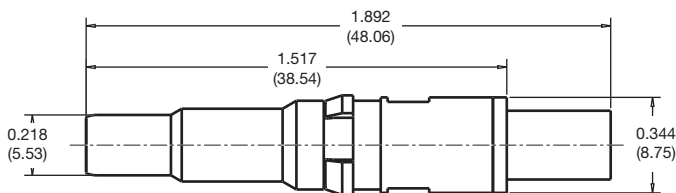
**3.15 mm Crimp Pin for RG316 & RG316DB**



**3.15 mm Crimp Socket for RG316 & RG316DB**



**5.5 mm Crimp Pin for SFT142 Cable**



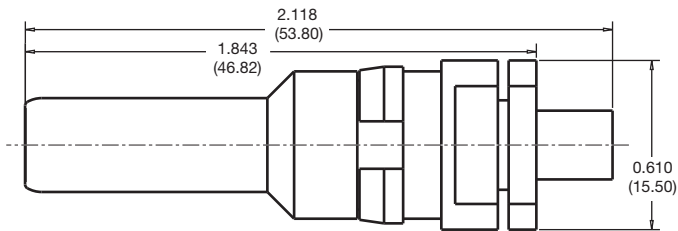
**5.5 mm Crimp Socket for SFT142 Cable**



**Notes**

1) Dimensions in inches (mm)

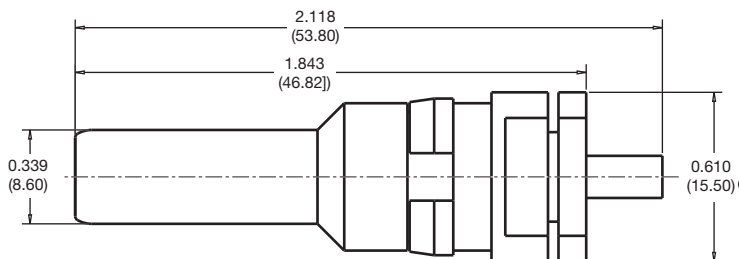
**8.6 mm Crimp Pin for SFT142 Cable**



**8.6 mm Crimp Socket for SFT142 Cable**



**8.6 mm Crimp Pin for RG316 Cable**



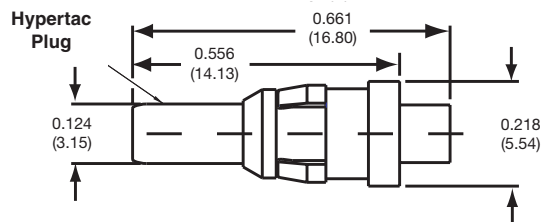
**8.6 mm Crimp Socket for RG316 Cable**



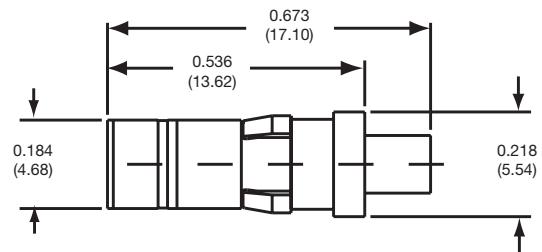
**DIRECT SOLDER CABLE ATTACHMENT**

Part Number	Description	Cable Type	Cabling Instructions
<b>3.15 mm</b>			
YCX0315-001AH	Direct Solder Socket	RG405, T-Flex 405	S50301, S50307
YCX0315-003H	Direct Solder Pin	RG405, T-Flex 405	S50303, S50308

**3.15 mm Direct Solder Attachment Pin**

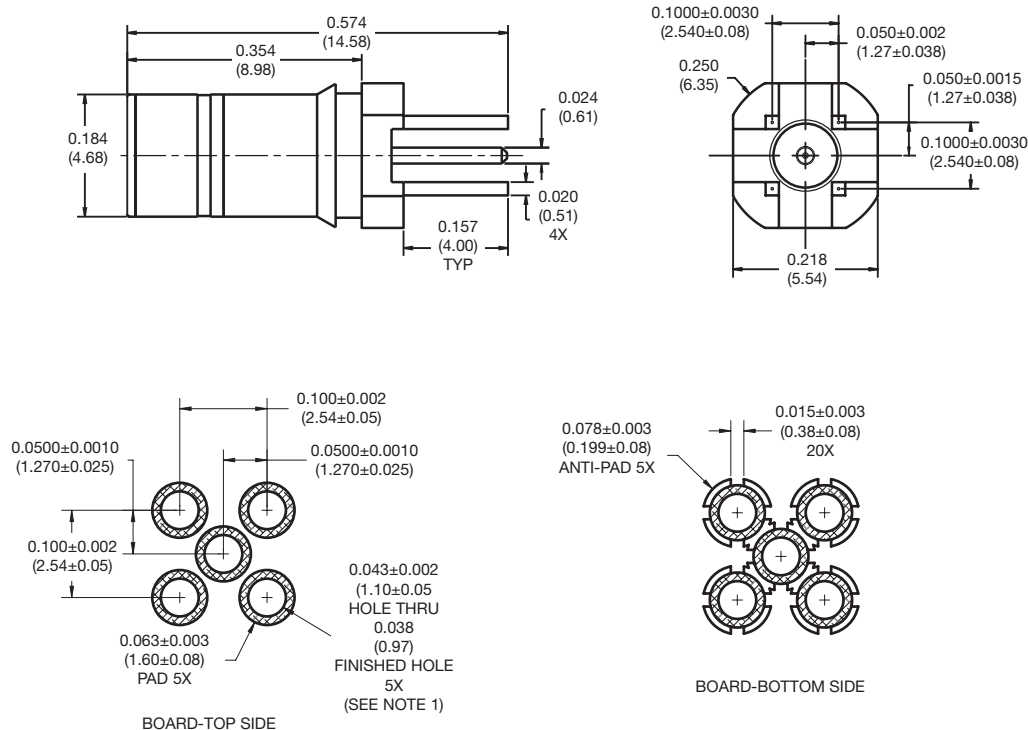


**3.15 mm Direct Solder Attachment Socket**



<b>PCB MOUNT TERMINATION</b>		
<b>Part Number</b>	<b>Description</b>	<b>Termination Method</b>
<b>3.15 mm</b>		
YCX0315-013AH	Straight Dip Socket	PCB Mount

### 3.15 mm Socket for PCB Mount



- NOTES:**
1. THE FINISHED HOLE DIAMETER DIMENSION SHOWN ASSUMES THAT THE DRILLED HOLE HAS TO BE EITHER SOLDER COATED OR TIN/LEAD PLATED OVER COPPER.
  2. THE ANTI-PAD IS INCORPORATED FOR THERMAL RELIEF DURING THE SOLDERING PROCESS

## ACCESSORIES

### For Inner Conductor Crimping

Crimp tool: AFM8  
 Positioner: T1957 (RG316, RG316DB)

### For Outer Conductor Crimping

Crimp tool: HX3  
 Die Set: T1958 (X101) (RG316), T2019 (X226) (RG316DB), X102 (SFT142)

### Contact Removal Tools

3.15mm: T1982  
 5.5mm: T2011  
 8.6mm: T1500